



RICHMONT
GRADUATE UNIVERSITY™

FACT BOOK
2008-2009

This document has been prepared by the Office of Institutional Effectiveness.

Questions about this document or the material contained herein may be directed to:

Stephanie L. Kirschmann, M.S.
Director of Institutional Effectiveness
Richmont Graduate University
1815 McCallie Avenue
Chattanooga, TN 37406
(423) 648-2421
skirschmann@richmont.edu

September 2009

Table of Contents

New Student Demographics	1
Enrollment Report	12
Graduation Rates and Degrees Conferred	14
Financial Aid	17
Faculty	18
Clinical Affairs	19
Hope Counseling Center Data	20
CBI Counseling Center Data	22
Library Services	23

NEW STUDENT DEMOGRAPHICS: 1998-2009

Table 1. Total New Students AY 1998-2009

	1998 1999	1999 2000	2000 2001	2001 2002	2002 2003	2003 2004	2004 2005	2005 2006	2006 2007	2007 2008	2008 2009
Total Students	20	68	40	42	61	71	126	139	115	107	109

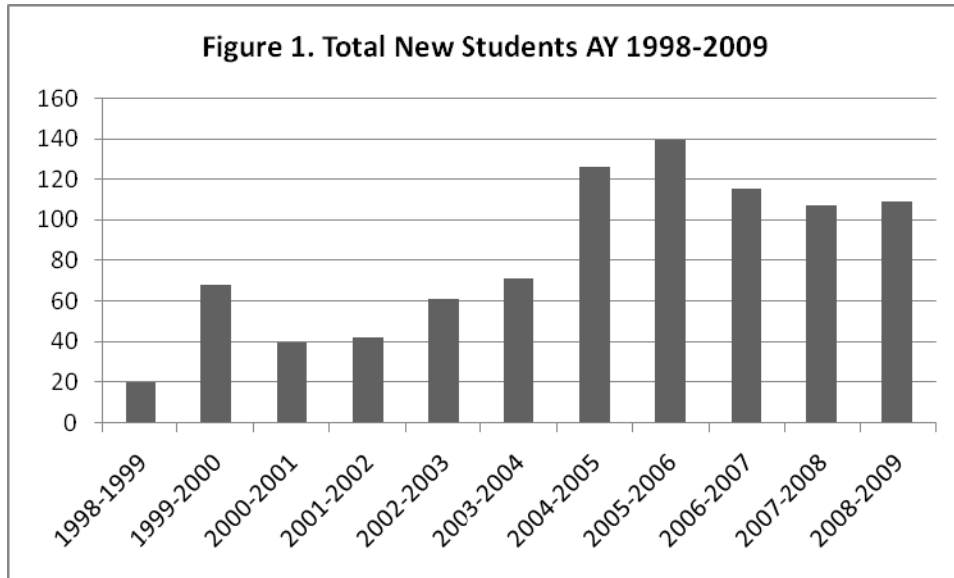


Table 2. Total New Students by Gender AY 1998-2009

	1998 1999	1999 2000	2000 2001	2001 2002	2002 2003	2003 2004	2004 2005	2005 2006	2006 2007	2007 2008	2008 2009
Gender											
Male	3	14	12	10	10	24	35	35	25	30	17
Female	17	54	28	32	51	47	91	104	90	77	92

Table 3. Average Age of New Students AY 1998-2009

	1998 1999	1999 2000	2000 2001	2001 2002	2002 2003	2003 2004	2004 2005	2005 2006	2006 2007	2007 2008	2008 2009
Average Age	30	33	31	32	32	34	35	35	34	33	33

Table 4. Total New Students by Ethnicity AY 1998-2009

	1998 1999	1999 2000	2000 2001	2001 2002	2002 2003	2003 2004	2004 2005	2005 2006	2006 2007	2007 2008	2008 2009
Ethnicity											
Caucasian	20	59	32	33	54	64	90	115	92	88	90
African American	0	7	3	7	11	6	19	16	16	16	14
Asian/Pacific Islander	0	1	4	0	2	0	0	2	1	0	4
Hispanic	0	0	1	1	0	0	3	3	3	2	1
Other	0	1	0	1	0	1	14			0	0
Multiracial	0	0	0	0	0	0	0			1	0
No Response								3			

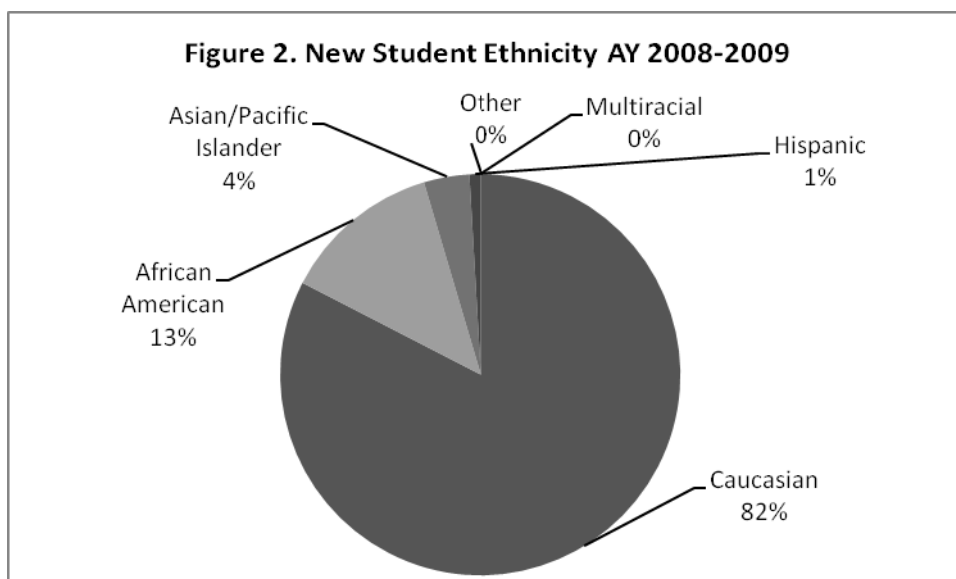


Table 5. Total New Students by Marital Status AY 1998-2009

	1998 1999	1999 2000	2000 2001	2001 2002	2002 2003	2003 2004	2004 2005	2005 2006	2006 2007	2007 2008	2008 2009
Marital Status											
Single	11	34	16	14	28	28	52	63	58	49	54
Engaged	0	4	1	0	1	5	3		0	0	0
Married	9	22	19	23	23	30	60	65	49	55	47
Divorced	0	6	3	3	8	6	7	5	7	3	5
Widowed	0	1	0	0	0	0	3	1	1	0	2
Separated	0	1	1	1	0	0	0	0	0	0	0
No Information					1		1	5			1

Table 6. New Student Residency AY 1998-2009

	1998 1999	1999 2000	2000 2001	2001 2002	2002 2003	2003 2004	2004 2005	2005 2006	2006 2007	2007 2008	2008 2009
Residency											
GA Resident	15	42	26	33	40	43	78	113	68	70	57
TN Resident	1	13	10	2	10	9	25	26	36	15	17
Other State	4	12	4	7	10	19	23	0	9	21	35
Other Country	0	1	0	0	1	0	0	0	1	0	0

Table 7. New Student Undergraduate GPA/GRE Scores AY 1999-2008

	1999 2000	2000 2001	2001 2002	2002 2003	2003 2004	2004 2005	2005 2006	2006 2007	2007 2008	2008 2009
Incoming Students	70	40	28	61	71	126	75	115	103	109
Undergraduate GPA	3.3	3.3	3.2	3.1	3.3	3.3	3.4	3.3	3.25	3.17
Mean GRE Verbal Score	464.0	491.0	446.3	483.2	500	456	486	490	475	493
Mean GRE Quantitative Score	473.3	490.3	522.9	507.7	503.2	504	520	500	505	529
GRE Verbal + Quantitative Score	937.3	992.3	989.6	987.9	1011.3	960	1006	1030	981	1015

Table 8. Total New Students by Degree Program AY 1998-2009

	1998 1999	1999 2000	2000 2001	2001 2002	2002 2003	2003 2004	2004 2005	2005 2006	2006 2007	2007 2008	2008 2009
Degree Program											
MS				8	6		7	7	4	1	5
MAPC				39	52		67	52	50	48	39
MAMFT							29	46	43	32	35
Non-degree				1	3		23	14	4	5	8
ISW								20	14	21	22

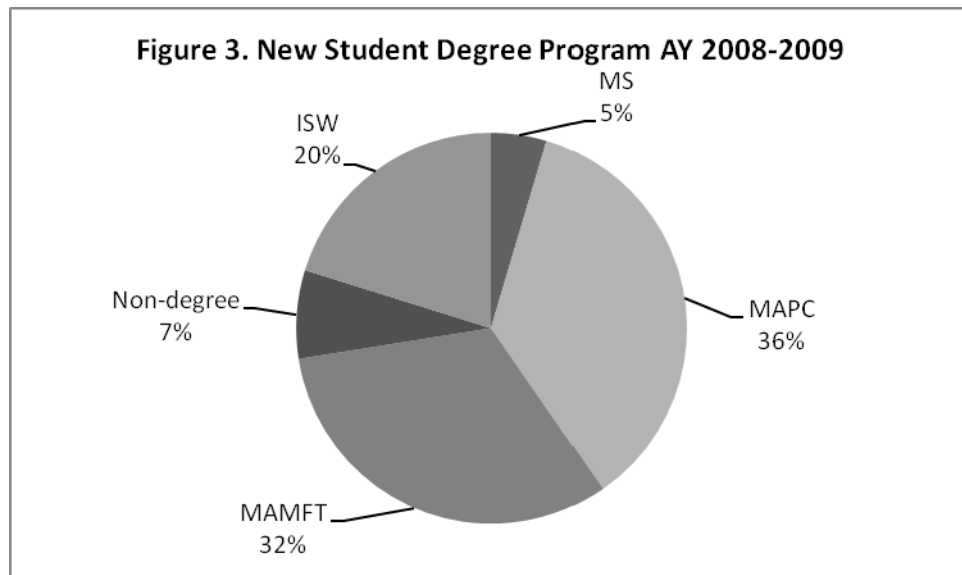


Table 9. Incoming Student Specializations AY 2005-2009

	2005-06	2006-07	2007-08	2008-09
Addictions	7	9	4	8
Child/Adolescent	21	22	21	20
Christian Sex Therapy	28	31	25	17
Coaching/Leadership*	9	6	3	-
Spirituality and Counseling	5	8	11	10

*** This specialization was discontinued. No new students were permitted to enroll in 2008-2009.**

New Student Undergraduate Information AY 2003-2008

Table 10. New Student Undergraduate Institutions AY 2003-2008 and Totals

* Effective 2008-09 only the undergraduate institutions of degree-seeking students are recorded.

Institution	2003	2004	2005	2006	2007	2008*	Total
Atlanta Christian College	1	3	5	0	4	0	13
Anderson University	1	0	0	0	0	0	1
Agnes Scott College	0	0	1	0	1	0	2
Appalatian Bible College					1	0	1
Appalachian State University	1	1	0	0	1	0	3
Argosy University	1	0	0	0	0	1	2
Asbury College	2	0	2	3	0	1	8
Ashland University	0	1	0	0	0	0	1
Auburn University	1	0	8	2	5	2	18
Ball State University	0	2	0	0	0	0	2
Baptist College of Florida	1	0	0	0	0	0	1
Baptist University of America	0	0	1	0	0	0	1
Barry University						1	1
Berry College	2	4	4	0	2	1	13
Bethel College	0	0	0	1	0	0	1
Beulah Heights Bible College	3	3	3	0	1	1	11
Brenau University	0	2	0	0	0	0	2
Bryan College	2	3	10	1	0	2	18
Butler University	0	1	0	0	0	0	1
California State University	0	1	0	0	1	0	2
Carolina University	0	0	1	0	0	0	1
Carson-Newman College	0	0	3	2	0	1	6
Cedarville University	1	0	5	2	0	3	11
Central Bible College					2	0	2
Central Michigan University	0	1	0	0	0	0	1
Clarion University	0	0	1	0	1	0	2
Clark Atlanta University	0	0	5	1	1	0	7
Clayton College	0	1	0	0	0	0	1
Coe College	1	0	0	0	0	0	1
College of New Rochelle	0	1	0	0	1	0	2
Columbia International University	1	0	1	1	0	0	3
Columbia Union College	0	1	0	0	0	0	1
Columbus College	1	0	0	0	0	0	1
Columbus State University	0	1	1	0	0	1	3
Converse College	0	1	0	0	0	0	1
Cornell University	0	1	0	0	1	0	2
Cornerstone University	0	0	1	0	0	0	1
Covenant College	0	5	5	2	5	1	18
Crichton College	1	0	0	0	0	0	1
Dallas Baptist University	1	0	0	0	0	0	1
Delaware State University	0	0	1	0	1	0	2
DeVry University	0	0	1	0	0	0	1
Drexel University						1	1
Duke University	0	1	0	0	0	0	1

Institution	2003	2004	2005	2006	2007	2008*	Total
Durham University						1	1
Earlham College	0	0	0	1	0	0	1
East Tennessee State University	0	1	2	0	0	0	3
Eastern Michigan University	0	0	1	1	0	0	2
Emmanuel College	0	1	1	0	1	0	3
Emory University	0	0	4	0	0	1	5
Excelsior College	0	1	0	0	0	0	1
Flagler College					1	0	1
Florida A & M University	0	0	2	0	1	0	3
Florida Atlantic University	0	0	1	1	0	0	2
Florida International University					1	0	1
Florida Southern University	1	0	2	1	0	0	4
Florida State University	0	0	1	1	1	0	3
Freed-Hardeman University	0	1	0	0	0	0	1
Friends University	0	0	1	1	0	0	2
Furman University	1	1	2	2	1	0	7
Gardner Webb College	1	0	0	0	0	0	1
George Williams College	1	0	0	0	0	0	1
Georgetown University	0	0	1	0	0	0	1
Gainesville College	0	0	0	1	0	0	1
George Washington University						1	1
Georgia College & State University	1	0	2	0	2	2	7
Georgia Institute of Technology	1	1	2	0	1	1	6
Georgia Southern University	4	0	3	0	1	0	8
Georgia State University	4	5	12	6	3	1	31
Goldey-Beacom College	0	0	1	1	0	0	2
Grambling State University	0	1	2	0	0	0	3
Hardin-Simmons University	0	0	1	1	0	0	2
Harvard University	1	0	0	0	0	0	1
Hawaii Pacific University	0	0	1	0	0	0	1
Howard University	0	0	1	0	0	0	1
Illinois State University					1	1	2
Illinois Wesleyan University					1	0	1
Indiana State University	0	0	0	1	0	0	1
Indiana University	0	0	1	0	0	0	1
Indiana University of Pennsylvania					1	0	1
Jacksonville State University	1	0	3	0	0	0	4
Johnson Bible College	0	0	1	1	0	0	2
Kansas State University	0	0	1	1	1	0	3
Kansas Wesleyan College	0	1	0	0	0	0	1
Kennesaw State University	0	0	3	1	1	1	6
Kent State University	0	0	3	0	0	0	3
King College	0	0	3	1	1	0	5
Knox College						1	1
Lafayette College	0	0	1	0	0	0	1
LaGrange College	0	1	0	0	0	1	2
Lee University	1	2	4	2	2	3	14
Liberty University	2	2	1	0	2	0	7

Institution	2003	2004	2005	2006	2007	2008*	Total
Louisiana State University	0	1	0	1	0	0	2
Luther Rice University	1	0	1	1	0	0	3
McNeese University	0	0	1	1	0	0	2
Mercer University	1	1	6	1	0	1	10
Meredith College	0	0	1	1	0	0	2
Messiah College	0	0	1	1	0	0	2
Miami University	0	1	0	0	0	0	1
Michigan State University	0	0	3	1	0	0	4
Middle Tennessee State University	0	1	1	2	0	0	4
Millikin University	0	1	0	0	0	0	1
Millsap College	0	0	1	1	0	0	2
Mississippi State University	0	3	0	0	0	0	3
Montreat College	0	1	2	1	1	0	5
Moody Bible Institute	0	0	1	0	1	0	2
Morehouse College	0	0	1	1	0	0	2
Murray State University	0	0	1	0	0	0	1
National Lewis University	0	1	0	0	0	0	1
Northeast Alabama College	0	0	1	0	0	0	1
New Orleans Baptist Theo. Sem.	1	0	2	2	0	0	5
Niagara University					1	0	1
North Carolina Central University	0	1	0	0	0	0	1
North Carolina State University					1	0	1
No Georgia College & State Univ	0	0	3	2	1	0	6
Northern Illinois University	0	0	1	0	0	0	1
Nova Southeastern University	0	0	1	0	0	1	2
Nyack College	0	0	2	2	0	0	4
Oakwood College					1	0	1
Oglethorpe University	2	0	0	1	0	0	3
Ohio State University	0	0	1	2	0	0	3
Oklahoma State University	0	0	0	0	1	0	1
Old Dominion University					1	1	2
Oral Roberts University	0	0	1	1	0	0	2
Oxford University	0	0	1	1	0	0	2
Pacific Lutheran University					1	0	1
Pacific Southern University	0	0	1	0	0	0	1
Palm Beach Atlantic University	0	0	2	1	0	0	3
Park University					1	0	1
Peabody University	0	0	0	1	0	0	1
Penn State University	0	0	2	0	0	0	2
Pepperdine University	0	0	1	0	0	0	1
Piedmont College	0	0	1	0	0	0	1
Presbyterian College	0	0	1	1	0	0	2
Purdue University	0	1	0	0	0	1	2
Radford University	0	1	0	0	0	0	1
Reinhart College	0	1	0	0	0	0	1
Rensselaer Polytechnic Institute	0	1	0	0	0	0	1
Rutgers University						1	1
Samford University	1	1	4	1	2	2	11

Institution	2003	2004	2005	2006	2007	2008*	Total
School of International Learning						1	1
Seattle Pacific University	0	1	0	0	0	0	1
Shippensburg University	0	0	1	1	0	0	2
Shorter College	1	2	4	3	0	0	10
Southern Adventist University	0	1	0	0	2	0	3
Southern Baptist Theological Seminary						2	2
Southern Polytechnic State Univ	1	0	0	0	0	0	1
Southern Wesleyan University	0	0	1	2	2	0	5
Southwest Missouri State Univ	0	1	1	0	0	0	2
Spelman College	0	0	1	2	2	2	7
Spring Hill College	1	0	0	0	0	0	1
Springfield College	0	0	1	0	0	0	1
St. Leo University	1	0	1	0	0	1	3
State University of West Georgia	1	0	0	0	0	0	1
Sterling College					1	0	1
Stetson University	1	0	0	0	0	0	1
Taylor University	0	0	3	0	1	1	5
Temple University	0	0	1	0	0	0	1
Tennessee State University	0	0	1	0	0	0	1
Tennessee Technological University	0	0	2	1	0	1	4
Tennessee Temple University	1	4	1	0	0	1	7
Tennessee Wesleyan College	0	1	1	0	0	0	2
Texas A&M University						1	1
Thomas Edison State College	0	0	1	0	0	2	3
Tiffin University					1	0	1
Toccoa Falls College	1	3	7	6	0	1	18
Trevecca University					2	0	2
Trinity University	0	1	0	0	1	0	2
Truett-McConnell College						1	1
Troy University	0	0	1	0	0	0	1
Tufts University	0	1	0	0	0	0	1
Tuskegee University	0	0	1	1	0	0	2
Union University	0	1	0	0	0	0	1
University of Alabama	0	1	3	3	1	0	8
University of Arkansas	0	0	1	0	0	0	1
University of California SD	0	0	1	2	0	0	3
University of California LA	0	1	0	1	0	0	2
University of Canterbury						1	1
University of Central Florida	0	1	0	0	0	0	1
University of Connecticut	0	1	0	0	0	0	1
University of Dallas	0	1	0	0	0	0	1
University of Detroit	0	1	0	0	0	0	1
University of Evansville	0	0	0	1	0	0	1
University of Florida	1	0	3	0	0	1	5
University of Georgia -- Athens	3	7	17	9	9	10	55
University of Houston	0	1	0	0	0	0	1
University of Illinois	0	0	0	1	1	0	2
University of Kansas					1	0	1

Institution	2003	2004	2005	2006	2007	2008*	Total
University of Maryland	0	1	0	0	0	0	1
University of Mary Washington	0	0	1	0	0	0	1
University of Massachusetts	0	0	1	1	0	0	2
University of Miami						1	1
University of Mississippi	0	1	0	0	0	0	1
University of Mobile	0	0	1	0	0	0	1
University of Nebraska	0	1	0	0	0	0	1
University of North Carolina	1	2	1	0	0	0	4
University of North Texas	0	0	1	1	0	0	2
University of Richmond	0	0	1	1	0	0	2
University of South Carolina	0	1	1	0	0	0	2
University of Tampa						1	1
University of Tennessee – Chattanooga	0	0	4	3	1	2	10
University of Tennessee – Knoxville	2	3	1	2	2	0	10
University of Texas -- Austin	0	0	2	1	0	0	3
University of Texas - Tyler						1	1
University of the Americas	0	1	0	0	0	0	1
University of the Cumberland						1	1
University of the South					1	0	1
University of Victoria	0	0	0	1	0	0	1
University of Virginia	2	1	0	0	1	0	4
University of West Florida						1	1
University of West Georgia	0	1	0	0	1	1	3
University of West Indies	1	0	0	0	0	0	1
University of Wisconsin	1	0	0	0	0	1	2
University of Wyoming	0	0	0	1	0	0	1
Upsala College	1	0	0	0	0	0	1
Vanderbilt University	0	0	1	1	1	0	3
Virginia Commonwealth University	1	0	0	0	0	0	1
Wake Forest University	1	0	1	1	0	0	3
Washington and Lee University	0	0	1	1	0	0	2
Washington State University	0	0	1	0	0	0	1
Webster University	0	0	0	1	0	0	1
Wesleyan College	0	1	0	0	1	0	2
West Chester University of PA	0	0	1	0	0	0	1
Wheaton College	0	0	2	1	0	1	4
Wingate University	0	0	1	0	0	0	1
Wichita State University					1	0	1
Winston-Salem University						1	1
Wofford College					1	0	1
Yale University	1	0	0	0	0	0	1

Table 11. New Student Undergraduate Majors AY 2003-2008

Undergraduate Major	2003	2004	2005	2006	2007	2008	Total
Accounting	1	0	0	2	0	2	5
Advertising	1	0	0	0	0	0	1
American Studies	0	0	1	0	0	1	2
Agriculture						1	1
Animal Science	0	1	0	0	0	0	1
Anthropology	0	0	1	1	0	0	2
Art/Fine Arts	1	1	2	1	1	0	6
Behavioral Sciences	1	1	1	0	2	1	6
Biblical Studies	7	3	0	0	3	4	17
Biochemistry	0	1	0	0	0	0	1
Biology	1	1	2	1	2	0	7
Business	5	7	10	3	4	4	33
Child/Family Dev	3	0	0	0	1	3	7
Christian Counseling	3	0	0	0	0	0	3
Church Music	0	0	1	2	0	0	3
Civil Engineering	1	0	0	0	0	0	1
Commercial Recreation	1	0	0	0	0	0	1
Communication	1	2	1	2	3	4	13
Communication Sciences & Disorders	0	0	1	1	0	0	2
Computer Science	1	2	1	0	0	1	5
Counseling	1	1	0	10	0	2	14
Criminal Justice	2	0	0	1	0	1	4
Dental Hygiene					1	0	1
Dietetics	0	1	0	0	0	0	1
Education	2	5	10	5	4	4	30
Economics	0	1	1	1	0	0	3
Engineering	0	1	0	1	2	1	5
English	2	4	2	2	6	3	19
Family Studies	0	1	0	0	6	6	13
Finance	0	1	0	1	2	0	4
Fashion Merchandising						1	1
Forestry						1	1
French	0	0	1	0	0	0	1
General Studies	1	1	0	0	0	0	2
Geography	0	0	1	0	0	0	1
Graphic Design	0	0	1	0	0	0	1
Guidance Counseling	1	0	0	0	0	0	1
Health Education	1	1	0	0	0	0	2
History	0	4	0	0	1	1	6
Home Economics	1	1	0	1	0	0	3
Hotel/Restaurant Management					1	1	2
Human Development & Family Studies	0	0	5	6	2	0	13
Human Ecology	0	1	0	0	0	0	1
Humanities	0	0	1	0	0	0	1
Human Relations	1	6	3	2	4	1	17
Human Resources					1	0	1
Industrial Engineering	0	1	1	0	0	0	2

Undergraduate Major	2003	2004	2005	2006	2007	2008	Total
Interdisciplinary Studies	0	0	1	0	0	0	1
Interior Design	0	1	0	0	0	0	1
International Studies	1	0	2	0	0	0	3
Journalism	2	0	0	1	0	1	4
Kinesiology & Health	0	0	1	2	0	0	3
Leadership						1	1
Liberal Arts						2	2
Marketing	2	2	2	2	1	0	9
Mathematics	0	1	0	0	0	0	1
Microbiology	0	1	0	0	0	1	2
Ministry/Missiology	3	2	0	0	0	1	6
Music/Music Education	1	1	0	1	1	1	5
Nuclear Engineering	0	1	0	0	0	0	1
Nursing	3	2	0	1	1	0	7
Occupational Education	1	1	1	0	0	0	3
Organizational Management	1	5	2	0	0	0	8
Outdoor Education	2	1	0	0	0	0	3
Pharmacy						1	1
Photography	0	0	1	0	0	0	1
Physical Therapy	0	1	0	0	0	0	1
Political Science	1	1	2	4	0	1	9
Psychology	47	46	67	49	34	38	281
Public Relations	0	2	0	0	0	0	2
Religion	3	2	4	5	5	3	22
Risk Management	0	0	0	1	0	0	1
Social Science	0	1	0	1	0	0	2
Social Work/Sociology	4	6	7	3	6	6	32
Spanish	2	0	3	2	0	1	8
Speech Pathology	1	0	0	0	1	0	2
Sports Medicine	1	0	0	0	0	0	1
Telecom Management	1	0	0	0	0	0	1
Theater	1	0	0	0	1	0	2
Theology	1	0	0	0	2	2	5

ENROLLMENT REPORT

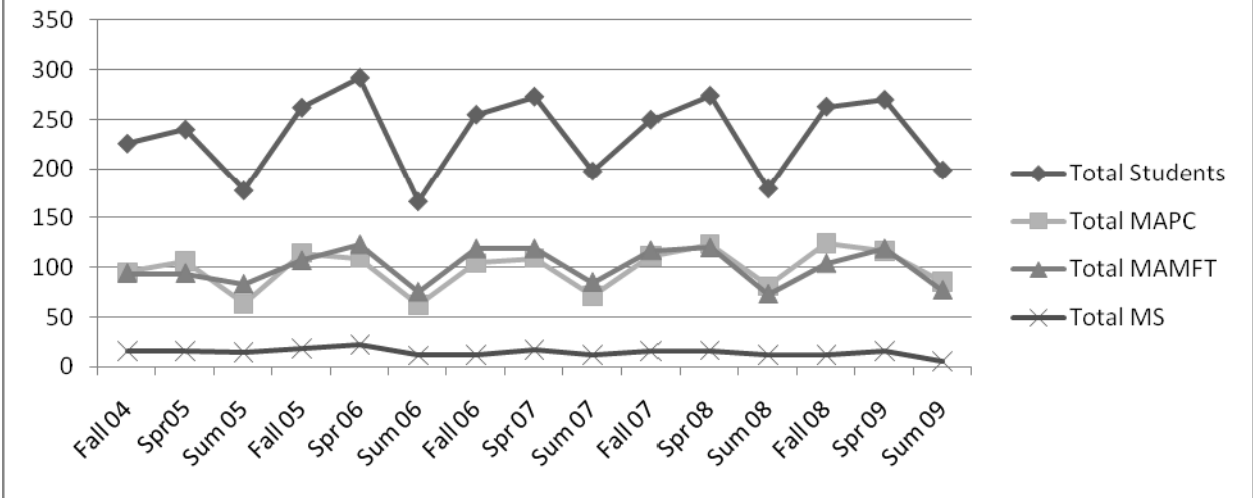
Table 12. Enrollment Report Fall 1999 – Summer 2009

	Fall99	Spr00	Sum00	Fall 00	Spr01	Sum01	Fall 01	Spr02	Sum02	Fall 02	Spr03	Sum03	Fall 03	Spr04	Sum04
Total Students	78	58	41	65	62	50	85	96	78	123	131		161	193	126
Total MAPC	51	37	28	49	43	32	65	58	54	56			140	78	
Total MAMFT														45	
Total MS	20	15	13	15	19	18	15	15	8	5			10	8	3
Total Non-Degree	7	6	0	1	0	0	4	17	15	18			11	9	6
Total FT	48	21	7	20	11	0	28	30							
Total PT	30	37	34	45	51	50	57	66							
Total FTE*							61	66	45	111	113		168	211	
Total Credit Hours							557	592	411	1007	1023		1520	1896	
Average Credit Hours							6.6	6.6	5.3	8.2	7.8		9.4	9.8	

	Fall04	Spr05	Sum05	Fall 05	Spr06	Sum06	Fall 06	Spr07	Sum07	Fall 07	Spr08	Sum08	Fall 08	Spr09	Sum09
Total Students	226	240	178	262	292	167	255	273	198	250	274	180	263	270	199
Total MAPC	95	106	63	114	109	62	104	109	71	111	123	81	124	116	85
Total MAMFT	94	94	83	107	123	75	119	119	85	117	120	73	104	119	77
Total MS	15	15	14	18	22	11	12	17	12	15	16	12	12	15	5
Total Non-Degree	25	25	18	12	37	19	19	27	22	7	16	14	7	4	19
Total FT															
Total PT															
Total FTE*	236	256	116	208	226	101	205	213	109	200	218	104	205.3	214	111.1
Total Credit Hours	2127	2305	1044	2383	2604	997	2290	2407	1041	2179	2463	965	2253	2455	1063
Average Credit Hours	9.4	9.6	5.9	9.1	8.9	5.9	8.98	8.9	5.1	8.7	8.8	5.4	9.5	9.7	6.2

** Effective Fall 2005 Richmond calculates FTE using the SACS formula: number of FT students plus credits earned by part-time students divided by 9 credits.

Figure 4. Total Enrollment in Degree Programs by Semester Fall 2004 - Summer 2009



GRADUATION RATES AND DEGREES CONFERRED

Graduation Rates Cohort 2001-2007

Cohort 2007 (those students who matriculated in Fall 2007, Spring 2008 or Summer 2008):

MS:

33 % graduated within two years

MAPC:

17% graduated within two years

MAMFT:

7% graduated within two years

Cohort 2006 (those students who matriculated in Fall 2006, Spring 2007 or Summer 2007):

MS:

10% graduated within one year

40% graduated within two years

75% graduated within three years

MAPC:

20% graduated within two years

38% graduated within three years

MAMFT:

18% graduated within two years

55% graduated within three years

Cohort 2005 (those students who matriculated in Fall 2005, Spring 2006 or Summer 2006):

MS:

18% graduated within one year

36% graduated within two years

73% graduated within three years

MAPC:

13% graduated within two years

25% graduated within three years

77% graduated within four years

MAMFT:

10% graduated within two years

45% graduated within three years

56% graduated within four years

Cohort 2004 (those students who matriculated in Fall 2004, Spring 2005 or Summer 2005):

MS:

15% graduated within two years
23% graduated within three years
30% graduated within four years

MAPC:

23% graduated within two years
35% graduated within three years
47% graduated within four years

MAMFT:

13% graduated within two years
37% graduated within three years
63% graduated within four years

Cohort 2003 (those students who matriculated in Fall 2003, Spring 2004 or Summer 2004):

MS:

30% graduated within two years
30% graduated within three years
60% graduated within four years

MAPC:

31% graduated within two years
37% graduated within three years
41% graduated within four years

MAMFT:

17% graduated within two years
40% graduated within three years
57% graduated within four years

Cohort 2002 (those students who matriculated in Fall 2002, Spring 2003 or Summer 2003):

MS:

11% graduated within a year
22% graduated within two years
55% graduated within three years
66% graduated within four years

(Cohort 2002 continued)

MAPC:

32% graduated within two years

43% graduated within three years

57% graduated within four years

MAMFT:

23% graduated within three years

77% graduated within four years

Cohort 2001 (those students who matriculated in Fall 2001, Spring 2002 or Summer 2002):

MS:

20% graduated within two years

60% graduated within three years

MAPC:

18% graduated within two years

47% graduated within three years

61% graduated within four years

63% graduated within five years

Table 12. Number of Degrees Conferred, 2001-2009

	2001	2002	2003	2004	2005	2006	2007	2008	2009
MAPC			26	34	26	26	21	24	26
MAMFT			3	6	10	8	9	8	6
MS	3	8	3	6	10	8	9	8	6

FINANCIAL AID

Table 13. Student Financial Aid by Type of Award, 2003-04 through 2008-09

Student Aid	2003-2004	2004-2005	2005-06	2006-07	2007-08	2008-09
College Work Study						
Number Awarded	13	13	11	24	29	32
Total Aid Awarded	\$18,902	\$12,839	\$21,810	\$43,895	\$64,316	\$99,920
DeKay Scholarship						
Number Awarded	7	7	7	7	7	10
Total Aid Awarded	\$8,125	\$10,205	\$13,894	\$12,002	\$12,750	\$17,278.75
Walker Scholarship						
Number Awarded	5	3	4	4	4	3
Total Aid Awarded	\$11,456	\$8,049	\$16,002	\$24,900	\$13,902	\$18,118.75
Caldwell Scholarship						
Number Awarded				1	1	1
Total Aid Awarded				\$13,280	\$9,960	\$4,450.00
F James Scholarship						
Number Awarded					1	0
Total Aid Awarded					\$1,000	\$0.00
Braund Scholarship						
Number Awarded					1	1
Total Aid Awarded					\$5,000	\$5,000.00
McClure Scholarships						
Number Awarded					8	9
Total Aid Awarded					\$19,500	\$24,772.60
Tuition Voucher						
Number Awarded	4	0	N/A	N/A	N/A	
Total Aid Awarded	\$5,675	0				
Total Aid Awarded (all scholarships)	\$44,158	\$31,093	\$51,706	\$94,077	\$126,428	\$169,540
Federal Loans						
Stafford Loans						
Number Awarded	117	157	165	176	163	174
Total Aid Awarded	\$1,484,822	\$1,962,875	\$2,353,948	\$2,999,878	\$2,361,025	\$2,702,452

FACULTY

Table 14. Roster of Instructional Faculty 2008-09

Faculty Type	Name	Faculty Rank	Administrative Role	Highest Degree	Teach Load	Date Rank Attained
Full Time	1 Cochran, Cara	Associate	Assistant Academic Dean	Ph.D.	5	Jul. 2005
Resident	2 Coyle, Philip	Professor	Academic Dean	Ph.D.	6	Jul. 2000
Faculty	3 Felix, Keny	Assistant	Assistant Dean of Students	Ph.D.	17	Dec. 2008
	4 Hanshew, Evalin	Professor	Dean of Clinical Affairs	Ph.D.	19	Jul. 2007
	5 Moon, Gary	Professor	VP, Chair of Integration	Ph.D.	8	Jul. 1995
	6 Pressley, Jana D.	Assistant	Assistant Dean of Students/Chatt, Dir CCC	Psy.D	13	Jul. 2004
	7 Terrell, DeAnne	Professor	Dean of Students	Ph.D.	14	Jul. 2007
	8 Terrell, Jeff	Professor	President	Ph.D.	4	Jul. 2000
	9 Thomas, Shatavia	Assistant	Assistant Academic Dean	D.M.F.T.	15	Dec. 2008
	10 Walker, Don	Assistant	Dir of Res	Ph.D.	17	Jul. 2006
	Full Time	1 Hughes, John	Assistant	Director of Libraries	M.L.S.	N/A
Library	2 Bunger, Ron	Assistant	Associate Dir of Libraries	M.L.I.S.	N/A	N/A
Full Time	1 Benner, David	Professor Emeritus		Ph.D.	N/A	Jul. 2002
Non Resident	2 Collins, Gary	Professor	Distinguished Faculty	Ph.D.	6	Jul. 2003
Full Time	1 Bradshaw, Steve	Professor		Ph.D.	7	Jul. 2002
Clinical Faculty	2 Eckert, Jeff	Assistant		Psy.D.	9	Jul. 2002
	3 McGee, William	Assistant		Ed.D.	6	Jul. 2003
	4 Rosenau, Douglas			Ed.D.	8	Jul. 2000
	5 Sisemore, Tim	Professor	Dir of CBI Counseling Center	Ph.D.	9	Jul. 2003
	6 Stone, Gaye	Assistant		Ph.D.	9	Jan. 2007
	7 Tiggelman, Casey	Assistant		Ph.D.	7	Jul. 2004
	8 Sytsma, Michael			Ph.D.	8	Jul. 2004
	9 White, Jama	Assistant	Dir of Clinical Training	Psy.D	5	Jul. 2002
Adjunct Faculty	1 Bolton, Staci	Adjunct		Psy.D.	11	Jul. 2006
	2 Brock, Dottie	Adjunct		Ph.D.	3	Jul. 2005
	3 Cooper, David	Adjunct		D.Min.	6	Jan. 1999
	4 Crabb, Larry	Adjunct		Ph.D.	4	Jan. 2007
	5 Deardorff, David	Adjunct		Ed.D.	6	Jul. 2008
	6 Dickinson, Wendy	Adjunct		Ph.D.	16	Jan. 2008
	7 Doverspike, William	Adjunct		Ph.D.	3	Jul. 2003
	8 Gladson, Jerry	Adjunct		Ph.D.	5	Jun. 1999
	9 Goehring, Marty	Adjunct		Ph.D.	2	Jan. 2006
	10 Hayes, D. Jason	Adjunct		Psy.D.	13	Jul. 2005
	11 Hermecz, David	Adjunct		Ph.D.	6	Jul. 2000
	12 James, J. Loren	Adjunct		Psy.D.	3	Jul. 2004
	13 Lyles, Michael	Adjunct		M.D.	2	May 2009
	14 Moffatt, Gregory	Adjunct		Ph.D.	3	Jul. 2005
	15 Schaffner, Angela	Adjunct		Ph.D.	5	May 2009
	16 Siwy, James	Adjunct		Ph.D.	3	Jul. 2000
	17 Snook, Steven	Adjunct		Ph.D.	6	Jul. 2000
	18 Sutton, Kimberly	Adjunct		Ph.D.	3	Jan. 2008
	19 Webb, Joyce	Adjunct		Ph.D.	3	Jul. 2000

CLINICAL AFFAIRS

Hope Counseling Centers – Atlanta 2008-2009

Hope Counseling Center at Mt. Paran
Building Four, Suite 200
4200 Northside Parkway
Atlanta, GA 30327

Hope Counseling Center at Mt. Zion
7102 Mt. Zion Blvd.
Jonesboro, GA 30236

Hope Counseling Center at West Cobb
1235 Friendship Church Road
Powder Springs, GA 30127

Hope Counseling Center at Mountain West
4818 Hugh Howell Road
Stone Mountain, GA 30087
Phone: (404) 266-0695 x2

Hope Counseling Center at Centerville
3594 Centerville Highway
Snellville, GA 30039

Hope Counseling Center at West Ridge
3522 Hiram Acworth Highway
Dallas, GA 30157

Hope Counseling Center at North Peachtree
4805 Tilly Mill Road
Atlanta, GA 30360

Hope Counseling Center at Mundy's Mill
1522 Mundy's Mill Rd.
Jonesboro, GA 30238

Hope Counseling Center at Lithia Springs
3566 Veteran's Memorial Highway
Lithia Springs, GA 30122

Hope Counseling Center Data

Table 15. Total Sessions Conducted by Interns AY 2002-2009

Center	2002-03	2003-04	2004-05	2005-06	2006-07	2007-08	2008-09
Clairmont	116						
Mt Paran	414	443	692	1130	855	976	1230
Mtn Park							
Roswell St	358	418					
Rehoboth	234	217	337				
Mt Zion		147	224	112	147	343	336
West Cobb			208	248	101+	179	327
Mountain W.				142	303	267	15
Snellville				145	10		
Eastridge			28	308	140		
West Ridge				23	336	508	580
North P'tree				6	179	162	288
Centerville						115	302
Lithia Springs							3
Mundy's Mill							8
All Centers	1148	1225	1489	2114	2071	2550	3082

Table 16. Total Fees Collected for Services Provided by Interns AY 2002-2009

Center	2002-03	2003-04	2004-05	2005-06	2006-07	2007-08	2008-09
Clairmont	\$3,460						
Mt Paran	\$11,340	\$10,473	\$16,172	\$26,698	\$21,012	\$25,524	\$32,614
Mtn Park							
Roswell St	\$9,856	\$9,573	XXX				
Rehoboth	\$5,830	\$4,174	\$7,160				
Mt Zion		\$2,550	\$5,385	\$2945	\$2840	\$4,880	\$6583
West Cobb			\$4,415		\$2830	\$5,574	\$8415
Mountain West				\$3662	\$7144	\$6,906	\$270
Snellville				\$4220	\$410		
Eastridge			\$615	\$6881	\$3525		
West Ridge				\$890	\$9145	\$14,163	\$10,955
North P'tree				\$220	\$5475	\$5,170	\$5540
Centerville						\$2275	\$4,949
All Centers	\$30,976	\$26,770	\$33,747	\$50,997	\$52,381	\$64,492	\$69,482

Table 17. Average Fees for Sessions conducted by Interns AY 2002-2009

Center	2002-03	2003-04	2004-05	2005-06	2006-07	2007-08	2008-09
Clairmont	\$29.83						
Mt Paran	\$27.39	\$23.64	\$23.37	\$23.63	\$24.58	\$26.15	\$26.52
Mtn Park							
Roswell St	\$27.53	\$22.90					
Rehoboth	\$24.91	\$19.24	\$21.25				
Mt Zion		\$17.35	\$24.04	\$26.29	\$19.32	\$14.23	\$19.59
West Cobb			\$21.23	\$22.10	\$28.02	\$31.14	\$25.74
Mtn. West				\$25.79	\$23.58	\$25.87	\$18.00
Snellville				\$29.10	\$41.00		
Eastridge			\$21.96	\$22.34	\$25.18		
West Ridge				\$38.70	\$27.22	\$27.88	\$18.89
North P'tree				\$36.67	\$30.59	\$31.91	\$19.24
Centerville						\$19.78	\$16.39
Lithia Springs							
Mundy's Mill							
All Centers	\$26.98	\$21.85	\$22.66	\$24.12	\$25.29	\$25.29	\$22.54

Table 18. Total Sessions Conducted and Revenue Generated by Faculty for All Hope Counseling Centers

	2002-03	2003-04	2004-05	2005-06	2006-07	2007-08	2008-09*
Number of faculty							5
Total Sessions	1480	1000	1139	1688	2,189	2117	979
Revenue	\$118,287	\$92,358	\$90,914	\$135,066	\$258,204	\$185,832	\$78,852.54

* Previous years' data includes sessions conducted and revenue generated by non-faculty staff counselors and Hope center coordinators.

CBI Counseling Center Data

Table 19. Income and Session Report for July 2000 thru June 2009

	Income	Sessions	Referrals Scheduled
July 2000 to June 2001	\$499,039.04	6,594	
July 2001 to June 2002	\$659,359.93	6,463	
July 2002 to June 2003	\$600,053.21	7,307	
July 2003 to June 2004	\$676,864.36	8,969	1017
July 2004 to June 2005	\$838,680.90	10,955	1511
July 2005 to June 2006	\$863,583.73	11,657	1319*
July 2006 to June 2007	\$752,748.41	10,990	1194
July 2007 to June 2008	\$837,637.43	12,895	1441
July 2008 to June 2009	\$823,618.91	12,203	1372

* Number of referrals actually scheduled. Not all referrals could be accommodated due to staffing limitations.

Table 20. Total Sessions Provided and Revenue Generated by Clinical Faculty at CBI Counseling Center by Year AY 2006-2009

	2006-2007	2007-2008	2008-2009
Total Sessions	7261	7,889	7,344
Revenue	\$571,006	\$581,769	\$564,933

Table 21. Total Sessions Provided and Revenue Generated by Student Interns at CBI Counseling Center by Year AY 2006-2009

	2006-2007	2007-2008	2008-2009
Interns		8	4
Total Sessions	606	912	404
Revenue	\$7,620	\$12,480	\$5,851

LIBRARY SERVICES

Table 22. Library Holdings by Type August 2006-June 2009

	August 2006	June 2007	June 2008	June 2009
Volumes				
Atlanta	13326	15,346	14,154	15,278
Chattanooga	15,595	16,925	17,248	18,140
Paid Periodicals				
Atlanta	34	34	34	34
Chattanooga	31	27	27	26
Free Periodicals				
Atlanta	16	16	16	16
Chattanooga	0	2	2	2
Newspapers				
Atlanta	0	0	0	0
Chattanooga	1	1	1	1
Films				
Atlanta	0	0	0	0
Chattanooga	14	0	0	0
Video Titles				
Atlanta	1880	186	201	217
Chattanooga	3,786	4,201	4,504	4,753
Audio Titles				
Atlanta	536	536	536	583
Chattanooga	24,189	24,619	25,232	25,551
Graphics				
Atlanta	0	0	0	0
Chattanooga	366	0	0	0
NetLibrary (E-books)	15,000	23,423	23,423	23,423
Collection V (in catalog)		14,126	14,126	14,126
Collection I (not in catalog)		9,117	9,117	9,117
Free Internet Resources				
Psychology/Counseling		1,202	1,202	1,202
Theology/Religion/Philosophy		722	722	722

Note: Number of volumes or items are net additions from the previous year (taking into consideration the number of volumes weeded – subtracted out from total).

Library Information by Academic Year AY 2006-2009

AY 2006-2007

Atlanta Library:

During 06/07 the Atlanta Library weeded out old videos that were a part of the Mount Paran Church of God collection. The Old Mount Paran Audio tapes will be weeded out in the next fiscal year.

Chattanooga Library:

A large purchase of books for the Chattanooga Library was made at the end of the fiscal year, and these new titles will be reflected in the report for the next fiscal year. [We made a move to using Emery-Pratt's notification and ordering system, and made many of the purchases for the Chattanooga Library using this system, which was finalized near the end of the fiscal year.]

Both Libraries:

A large number of records were included in the catalog for free Internet resources (books and articles).

We now own access to NetLibrary's Collections I and V, with the majority being in the catalog for access.

AY 2007-2008

Atlanta Library:

A large purchase of books for the Chattanooga Library was made at the end of the fiscal year, and these new titles will be reflected in the report for the next fiscal year (approximately 200 volumes). [We made a move to using Emery-Pratt's notification and ordering system, and made many of the purchases for the Chattanooga Library using this system, which was finalized near the end of the fiscal year.]

During 07/08 the majority of juvenile books were weeded out of the collection, as well as other materials, to make room for growing counseling collection – reflecting lower numbers in the total number of monographic volumes.

Chattanooga Library:

A large purchase of books for the Chattanooga Library was made at the end of the fiscal year, and these new titles will be reflected in the report for the next fiscal year (approximately 400 volumes). [We made a move to using Emery-Pratt's notification and ordering system, and made many of the purchases for the Chattanooga Library using this system, which was finalized near the end of the fiscal year.]

During 07/08 no more than 30 volumes were weeded from the library collection.

AY 2008-2009

Collections Management

The Richmond libraries received additional funding (\$35,000) to enhance the collections in support of CACREP accreditation and in support of a potential new PhD program. This

funding is expected to continue until the collections have reached a level that will fully support the proposed Doctoral program. Purchasing choices to support these programs are being systematically made through a project comparing the Richmond collections with the collections of libraries that support Masters and Doctoral level CACREP accredited programs. To date (during the 08/09 fiscal year), approximately \$23,000 have been spent on this project specifically.

[For current collection numbers see Library Holdings above.]

Library Instruction

During 08/09, a total of 10 Classroom Library Instruction sessions were performed by library faculty.

Table 23. Library Instruction Sessions AY 2008-2009

	Fall Orientation	Fall Semester	Spring Orientation	Spring Semester	Summer Orientation	Summer Semester
Atlanta	1	2	1		1	0
Chattanooga	1	1	1	1	1	0

Interlibrary Loan

During 08/09, both libraries were active in Interlibrary Loan activity, showing an increase in research amongst the library user community.

Table 24. Interlibrary Loan Transactions

	Atlanta	Chattanooga	Total
Faculty Requests	82	1	83
Student Requests	456	46	502
Total Requests	572	47	619
Articles	402	43	445
Books	170	3	173
Other	0	0	0
Interlibrary Lending	42	8	50
Intralibrary lending	60		60

Table 25. Total Circulation AY 2008-2009

	Books	A/V	Audio	Other	Students	Fac/Staff
Atlanta	2145				1716	385
Chattanooga	10246	5120	2884	0	721	347
Total	12391	5120	2884	0	2437	732
Total Circulation (Books, AV, Audio)	20395					

Database Searches

The vast majority of searches and full-text article retrieval was in the three psychological databases: PsycInfo, PsycArticles, and the Psychological and Behavioral Sciences set.

Table 26. Total Database Searches AY 2008-2009

Index Searches	213392
Full-Text Articles	20670