



CONNECTING

WWW.PSY.EDU

SUMMER 2004

One in four people in the United States suffers from anxiety, depression, substance abuse or some other form of mental illness, according to the National Institutes for Mental Health. By integrating the tools of applied psychology with the power of Christian faith, PSI is training new generations of difference-makers – professional counselors and marriage and family therapists.

The average student who completes our graduate program in Christian counseling has the potential to impact 8,000 souls throughout the course of his or her career. At PSI, our business is leading others to wholeness in mind *and* heart through the grace of Jesus Christ.

This approach makes PSI unique, and we are committed to continuing our legacy of excellence. In May, we held our 31st commencement ceremony at our Chattanooga campus. Forty-one students graduated that day, and we applauded their accomplishments and thank them for the sacrifices they made to be part of our program and advance the Kingdom.

One of our graduates in the Class of 2004 wrote a poem about the role of the counselor and shared it with us during the communion service we held just prior to the commencement ceremony. This is always a special time of reflection for both students and faculty. We're sharing Wendy's poem with you because it really captures PSI's mission and the results we hope to achieve by training our students to be difference-makers.

You too can be a difference-maker by supporting our work for the Kingdom. As a private institution, PSI relies on voluntary financial support to provide graduate education in Christian counseling, as well as related services to the Church to facilitate Christ-centered transformation. I hope you'll prayerfully consider giving to PSI so we can expand our programs and services to meet the growing need for skilled clinicians, especially those who want to integrate their faith into their practices.

Yours truly,

C. Jeffrey Terrell, Ph.D.
President

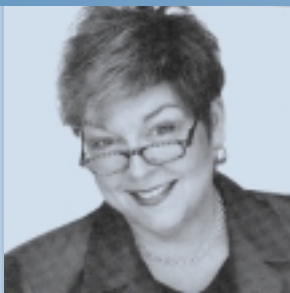


PSI's 31st commencement ceremony was held May 15 at the Chattanooga campus.

COUNSELOR

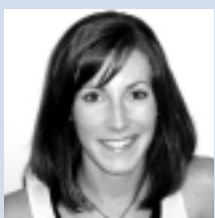
The lives that you hold are so precious
Just how much only you will ever know
As each time they come to your office
To share each burden and woe,
To hand you their heart in its pieces
And ask that you take it with care
Because trust is a fragile possession
That with them, as you listen, you share.
You will see all the heartache and sorrow
That this life can put in the way
But you also possess a great love
That puts hope back into the day.
So don't give up on this journey you're taking
Even when it seems hard and unfair
Remember that you are His child
He holds your own heart in His care.
What a wonderful opportunity you have
To see a problem unfold
And then by your warm gentle greeting
Help a heart that was on its way cold.
And on days that you see the power of counseling
Hold those closely to the depths of your heart
For what can you do but be thankful
For those in whose lives you take part.

By Wendy Norwood
PSI Class of 2004



Jan Silvious at PSI Nov. 30

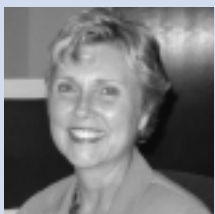
Jan Silvious will be a featured speaker at PSI's annual fund-raiser in Chattanooga on Tuesday, Nov. 30, at 7 p.m. Jan is a guest speaker for Women of Faith and has spoken for Moody's Women's Conferences, Precept Ministries National Women's Convention and numerous church conferences all over the country. A counselor, Bible teacher and author, her passion is to help others understand relationships and be freed from life's ruts.



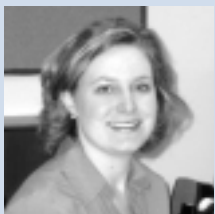
Joannah Mason has joined the Student Government Association (SGA) in Atlanta as treasurer. And in an effort to show God's love to the Atlanta community and increase awareness of PSI, the SGA is working with Hands On Atlanta to encourage volunteerism among the student body. An orientation was held in late June with plans for another one this fall so PSI students can get involved in Hands On Atlanta's various activities, including Hands On Atlanta Day, which is Oct. 2.



We wish **Meredith Lawson-Rowe** a fond farewell as she and her family relocate to Ohio. Meredith was employed at PSI for six years, serving as assistant to the president, registrar and chief of smile therapy.



Betty Hemrick has joined us as the new assistant to the president and assistant registrar in Atlanta. Betty spent the last 12 years as executive assistant to one of the partners at Carter, the largest commercial real estate firm in the Southeast.



Welcome to **Stephanie Kirschmann**, PSI's new registrar based at the Chattanooga campus. Stephanie joins us from Southern Adventist University, where she worked in the records office and also completed her master's in marriage and family therapy.

PSI also would like to welcome **Dr. Jana Pressley** and **Dr. Casey Tiggelman** who have joined the CBI Counseling Center in Chattanooga. In addition to building their practices, both are teaching courses at PSI's Chattanooga campus in their respective specialties, child and adolescent treatment and marriage and family therapy.

Difference-Making 101



Bobby Strickland, a PSI alumnus and counselor at the Mt. Paran Hope Counseling Center, has published two children's books, *Adeline* and *Adeline's Porcupine*. The lavishly illustrated books are humorous stories told in Dr. Seuss-style rhyme to teach kids ages 4-8 spiritual

principles. Bobby wrote the first book as a baby gift for a former co-worker whose daughter is – you guessed it – Adeline. He never thought it would be published much less become part of a best-selling series. Two more books are in the works.

Dallas Bay Baptist Church in Hixson, Tenn., and **West Cobb Baptist Church** in Powder Springs, Ga., have partnered with PSI to open new counseling centers within the churches. These centers join four others in the network of PSI Hope Counseling Centers in Atlanta and Chattanooga. This ministry provides clinical training sites for PSI students and helps local churches provide quality yet affordable Christian counseling services.

A new course has been added to the executive leadership and coaching track in conjunction with the INJOY Group's annual **Catalyst** conference. CPSY 5042 Executive Leadership and Coaching will be experienced through this two-day conference for next-generation leaders Oct. 7-8 at The Arena at Gwinnett Center. Students will hear from some of the most renowned leaders in ministry today, including **John Eldredge, Erwin McManus, John Maxwell** and **Andy Stanley**.

PSI has partnered with the **Institute for Sexual Wholeness (ISW)** and the **American Association of Certified Christian Sexual Addiction Specialists (AACCSAS)** to help certify and train Christian counselors and pastors in treating sexual addiction. PSI and ISW offer the only sex therapy training program taught from a Christian worldview, launching a sex therapy specialty track at PSI in 2001. The new relationship with AACCSAS will provide more specialized and professional training in dealing with sexual addiction from a Christian perspective. Please see our Web site for information on the courses in the sex therapy track.

Near-death experience changes PSI student's life direction



Adony Pierre Louis will graduate from PSI in May with an M.A. in Professional Counseling. Playing the piano is his favorite form of worship.

Adony Pierre Louis thought he wanted to be a mechanical engineer when he grew up, but a near-death experience in 1990 changed those plans. While walking to school in Port-au-Prince, Haiti, Adony was caught in a gunfight between guards loyal to the country's president and soldiers in the national army. Growing up in a country prone to civil and political unrest, he'd witnessed horrific acts of violence but had never been this close to losing his own life.

"I ran home and dropped to my knees, thanking God for saving me that day," Adony explains. "I told God I was willing to put my dreams on hold if he would open the doors that would allow me to know him better and study his Word. It was a defining moment."

Later that summer, Adony, then 16, traveled to Miami as he and his family had done for years to visit friends and family there. However, Adony would not return to Haiti at the end of this vacation. Instead, he enrolled in North Miami High School. "The circumstances just fell into place for me to stay in America," he says. "God was starting to open doors for me."

Four years later, Adony enrolled at Trinity College of Florida. When economic sanctions imposed against Haiti hindered his family from sending money to pay for his tuition, God opened some more doors for Adony. His tuition was waived when Trinity discovered his musical ability, recruiting him to be part of its ministry team. In addition, he was able to secure a resident assistant position in the men's dormitory, which paid for his room and board.

What else did God have in store for Adony? Well, it was at Trinity that Adony met his wife, Karen. They will celebrate their sixth wedding anniversary later this summer. Further, it was at Trinity that Adony learned

about PSI. Growing up in a Christian home, the son of a Baptist missionary, Adony had decided to major in missions at Trinity; however, he switched to counseling before his senior year.

"I decided that counseling would help me be more effective in the missions field," Adony says. "And my gifts are in working with people, so counseling offered the right fit," he adds.

Adony began work on his M.A. in Professional Counseling at PSI in 2002, following the recommendation of two of his professors at Trinity. While here, he's developed a group curriculum for spiritual abuse recovery. "Many people have been manipulated or coerced in the name of God, so it's important to me to help those who are plagued with false guilt or shame by teaching them who God really is," Adony explains. "God is not an abuser; he doesn't use shame to accomplish his will. His motivation and motivator is love."

Adony is a passionate person with many talents and interests. When he came to Atlanta for graduate training at PSI, he started his own business, a mobile mechanic service. He's also a certified personal trainer and has kept up his music. He learned to play the piano by ear at age 10 and considers playing in the dark his favorite form of worship.

One of his many dreams is to use his counseling skills to minister to missionary families in the field – perhaps even in his native Haiti, where his parents and two sisters still reside. His other dreams are to form a writing team with his wife, who is already a writer, and to start a family.

"I've grown in unprecedented measure at PSI," Adony says. "I'm a more mature Christian and a better husband for my experiences here. Plus I'm equipped to really help others, which is clearly what God wanted for me all along."

BOARD OF TRUSTEES

CHAIR

MRS. ELEANOR POWELL
Signal Mountain, TN

VICE CHAIR

DR. DAVID COOPER
Atlanta, GA

MEMBERS

JAMES F. BELL, JR.
Atlanta, GA

DANIEL BRADLEY
Atlanta, GA

DR. ARVEL BURELL
Atlanta, GA

MRS. CINDY CATHY
Jonesboro, GA

GEORGE M. CLARK, III
Chattanooga, TN

CHRISTOPHER COCHRAN
Atlanta, GA

MRS. TINA CURRIN
Lookout Mountain, TN

TOM DECOSIMO
Chattanooga, TN

ROBERT A. FRANKLIN
Chattanooga, TN

HUGH D. HUFFAKER, JR.
Chattanooga, TN

BISHOP FLYNN JOHNSON
Atlanta, GA

MRS. NANCY M. MILLS
Chattanooga, TN

WARD W. NELSON
Chattanooga, TN

LARRY OWENS
Atlanta, GA

DR. IKE REIGHARD
Kennesaw, GA

DR. RANDY RUBLE
Due West, SC

MRS. SUE SAWRIE
Chattanooga, TN

JACK WEBB
Chattanooga, TN

DR. WILLIAM N. WILLIS
Kennesaw, GA

Poindexter Library Annual Book Sale

The Poindexter Library at PSI's Chattanooga campus will host its annual book sale Saturday, Oct. 2, from 9 a.m. to noon. The event takes place in the fellowship hall and will feature a wide variety of titles for both children and adults and also includes video tapes. Most of the materials that will be on sale are duplicates and donated books the library hasn't been able to use. Money raised from the book sale will be used to purchase Bible studies, books on Christian living, works of fiction, and audio and video tapes for public use at the Poindexter Library.

2004 PSI Alumni Reunion



'95 Todd Wilson, M.S., L.M.H.C., L.P.C., is a licensed mental health counselor with Katallasso Counseling in Altamonte Springs, Fla. He also is a co-founder of ShepherdCare, Inc., a nonprofit organization that exists to encourage, support and assist pastors in acquiring the tools necessary to avoid burnout and moral failure in the ministry. Todd plans to relocate to Atlanta in January to join the Intimacy Counseling Center with PSI adjunct professors Drs. Doug Rosenau and Michael Sytsma, along with Vickie George, another PSI alumnus. In addition to private practice, he'll continue to serve as the director of ShepherdCare. Todd says his experience at PSI was "invaluable" because he learned the importance of personal application. "To effectively apply truth to my clients' lives, I have to first be willing to apply what I learn to my own life," he explains. "This revelation transformed my entire worldview both personally and professionally. PSI challenged me to boldly live from the passion within my heart." Through the ShepherdCare ministry, Todd teaches pastors to apply truth to their own lives first, allowing it to transform them so they will have real passion to share with others. "Only when they've been transformed by a particular truth themselves will they truly be able to affect real and lasting change in the lives of those to whom they minister," he says.

WE'D LOVE TO HEAR FROM YOU SO WE CAN PUBLISH A CLASS NOTE ABOUT HOW YOU'RE MAKING A REAL DIFFERENCE.

Please let us know where you are and what you're doing. You can e-mail the editor at btharpe@psy.edu.

The 2004 PSI Alumni Reunion will feature a continuing education workshop led by **Dr. Larry Crabb** on Friday, **Oct. 1**, at the **Cobb Galleria Centre** in Atlanta. The reunion begins with a **reception at 4:30 p.m.**, followed by Dr. Crabb's **workshop from 6 to 9 p.m.** The workshop also is part of a course



Dr. Crabb is teaching at PSI called **Spirituality and the Practice of Counseling Psychology**. For more information, please visit the Alumni & Friends section of our Web site at www.psy.edu.

New Alumni Association Members

We'd like to welcome the following individuals to the new PSI Alumni Association and thank them for their generous support. Our goal is to establish 100 alumni association memberships by the 2004 Alumni Reunion, which is Friday, Oct. 1. We're more than half way there!

Janice Acker, Psy.D., L.P.
Jill S. Andrews
Mike Atwater, Ph.D.
David W. Aycock
Timothy J. Aycock
Kelly V. Bauer
Heidi B. Bolton
Staci S. Bolton
Diane "Dee" Bouwman
Steve P. Bradshaw
Ron Braund
Vilda S. Brannen
Tracy M. Busse
Dianne U. Capers
Chip Carter
Susan K. Casale
Cindy Cathy
Christopher Cochran
Sherry W. Dickson
Chuck D. Dolph
Helen B. Douthat

Vianne S. Dowley
Philip Y. Drake
Connie Erwin
Patricia M. Fulton
Patricia (Patty) M. Fultz
Monique Gadson
Ginger Garner
Vickie L. George
Andrea J. Hall
Rebecca D. Hill
Peggy S. Hurst
Freddy G. James
Andrea J. Johnson
Susan C. Johnson
Amanda M. Jordan
Dowdy Layne
Brett H. Lebhar
Jennifer P. Lewis
Pauline B. McLemore
Amanda D. McGehee
Leslie B. Milligan, L.P.C.

James P. Milner
Rita L. Moore
Denise A. Nebeker
Emory L. Otto
Courtney Cheri Putnam
Judith Kimberly Ragan
Heather M. Runyon
Anna Rusinowski
Linda M. Silva
David Simpson
Holly Simpson
Lauren C. Spooner
Amy Swayze
Lydia Teh
DeAnne Terrell
Christy H. Wages
Rachel L. Walker
Carter Weeber
Robert (Bob) B. Williams
Todd Wilson
Heath Wise

If you're a PSI graduate, please consider joining the new PSI Alumni Association so you can stay connected to your PSI family. Membership benefits include an annual subscription to *Conversations*, continuing education seminars, and access to an online membership directory, which we plan to launch this fall. Your participation also helps PSI financially, and gifts are tax deductible.

You can join the PSI Alumni Association by visiting the Alumni & Friends section of our Web site at www.psy.edu. Just fill out the alumni association membership form, and return it to PSI along with the appropriate gift to establish your membership.

HONORING LOVED ONES PAST AND PRESENT

Most of us have a family member or friend we remember with a gift on special occasions. But in some cases, this special person may precede you in death. What better way to commemorate your valued relationship than establishing a gift in honor or in memory of your loved one?

We receive donations throughout the year in honor and in memory of special people who have touched donors' lives – a parent, a mentor or a long-term friend. While demonstrating appreciation for this treasured relationship or creating a thoughtful remembrance, these gifts also help PSI.

Most honors and memorials are received as cash contributions, which help to fulfill immediate PSI program needs. Memorials also can be established by will in the form of cash, stock or property bequests to accomplish a major project or further long-term growth.

Regardless of the gift method chosen, you have the opportunity to honor someone special who's still living or perpetuate the happy memory of a loved one who's died. Further, that acknowledgement can bring many benefits to others through PSI's ministry.

In addition to listing honors and memorials in *Connecting*, we've established a *Book of Remembrance*, which will become part of PSI's history and archives. The following are excerpts from a few of the letters written by donors to explain the reasons they decided to honor or memorialize someone special to them.

BAIRD MCCLURE

Honored by Charlotte Grant

"Baird had many talents, and she used them obediently and lovingly in her unwavering service to God. Only He knows how many delicious, mouth-watering meals she served and how many blessings she led at her table; how many Bible classes she taught; how many encouraging notes she wrote to her beloved friends in the mission field; how many coffee cakes and rolls she baked and delivered; how many phone calls and visits she made to friends, new neighbors or strangers in need; and how many prayers she prayed. Baird was my Godmother and dear friend, and I thank God for the influence she had on my life."

PEGGY RAGON

Honored by Mildred Thompson

"It was my privilege to work with Peggy for several years. To know Peggy was to love her. She was always cheerful, kind and sensitive to the needs of others. However, the shining point in her life was her deep, abiding faith in her Lord. Her faith never wavered because she knew to whom she belonged. I'm so thankful God permitted our paths to cross. She was a great blessing to all who knew her and an inspiration to many."

NICK SENTER

Honored by George & Katherine Long

"We met Nick as our next door neighbor when we moved to Lookout Mountain, Tenn., in 1964. At that time, he was the highly respected mayor of our community, serving on the town commission for 25 years or more. He also coached our son's baseball team in the Dixie Youth League (DYL), becoming the 'Czar' of the DYL in a number of states around the country. His Christian faith combined with his business acumen made Nick a conscientious steward of the resources God has entrusted to him. His faith also led him into an active membership at First Presbyterian where he served as a Sunday school teacher, deacon and elder over many years. We have great admiration for Nick's character and appreciate his friendship."

MARY P. WILLINGHAM

Honored by "Bobby" and "C.C." Edwards

"'Granny' to us, Mary has been a living example of Christ and his unconditional love. She is always there when you are hurting emotionally and is available with a listening ear. I love my Granny, and above all, I admire her. She is the clearest example of Christ that I know here on earth. We love her dearly!"

HONORS & MEMORIALS

IN HONOR

Ginger Garner

IN MEMORIAL

David Harr

Mrs. Holly Johnston

Judy Powell

Peggy Ragon

Kay Thompson

Andy Trotter

Mr. and Mrs. William A. White

THESE GIFTS WERE RECEIVED FROM
APRIL THROUGH JULY 2004.



*A higher standard.
A higher purpose.*

PSI is a member of the Evangelical Council for Financial Accountability (ECFA), which is committed to helping Christ-centered organizations earn the public's trust through developing and maintaining standards of accountability that convey God-honoring ethical practices.

CBI Class Schedules

Chattanooga Bible Institute (CBI) class schedules will be posted on our Web site at www.psy.edu

under the **Services** section. By posting this information online as opposed to sending out mass mailings, we can be better stewards of our operational funds, which of course are supplemented with generous gifts from donors.

However, if you don't have Internet access or would prefer to receive the CBI class schedules via mail, we're happy to accommodate you.

Please call 423-266-4574 to request the CBI class schedules in writing.

The Journey

The essence of Christian spirituality is to follow Christ on a pilgrimage that will often leave us feeling as if we are lost in the desert or heading in the wrong direction away from everything known and safe. But the distant land we're called to is not heaven or any physical place. Rather, it's the new creature into whom Christ wishes to fashion us – the whole and holy person who finds his or her uniqueness, identity and calling in Christ.

Are you ready for this journey? The next issue of PSI's *Conversations* journal can help. Its theme is "Nature of the Journey: What Movement Toward God Looks Like." This issue will be available in mid-October and includes articles by Irene Alexander, David and Juliet Benner, Larry Crabb, Ben Johnson and John Ortberg.

Conversations is designed to provide spiritual accompaniment and honest dialog for those who seek radical transformation in Christ. The journal is published semi-annually, in the spring and fall. To subscribe, please visit the *Conversations* Web site at www.conversationsjournal.com.

UPCOMING EVENTS

CounselWorks 2004

Sept. 15-18
Coronado Springs Resort,
Orlando, FL
www.counselworks.net

Alumni Reunion

Oct. 1
Cobb Galleria Centre,
Atlanta, GA
www.psy.edu

Poindexter Library Annual Book Sale

Oct. 2
PSI, Chattanooga, TN
www.psy.edu

Catalyst*

Oct. 7-8
Arena at Gwinnett Center,
Atlanta, GA
www.injoy.com/catalyst04

Preview Day

Oct. 30
PSI, Atlanta, GA
www.psy.edu

Mental Health & Missions

Nov. 18-21
Potawatomi Inn, Angola, IN
www.mti.org

Preview Day

Nov. 20
PSI, Chattanooga, TN
www.psy.edu

Annual Fund-raiser

Nov. 30
PSI, Chattanooga, TN
www.psy.edu

* PSI students who wish to attend Catalyst for academic credit must register through their academic advisors.

btharpe@psy.edu

404-233-3949, ext. 103

Director of Institutional Advancement

Bunny Tharpe

from this publication, please contact the editor:

To update your address information or to unsubscribe

Chattanooga, Tenn.

Our campuses are located in Atlanta, Ga., and

counseling and marriage and family therapy.

and Schools to award master's degrees in professional

accredited by the Southern Association of Colleges

Church for Christ-centered transformation. PSI is

to make Christian counseling a servant of the

integrating applied psychology and practical theology

PSI's mission is to provide graduate education,

as the Chattanooga Bible Institute (CBI) in 1933.

Studies Institute (PSI), which was originally founded

Connecting is a publication of the Psychological

Atlanta, GA 30327

2055 Mount Paran Road, N.W.

McCarty Building